

January 30 - April 1, 2012

# SAFE SPECIALS

Best Prices of the Year!

Premium Storage for your Firearms & Other Valuables! Protection for your Family!



## BROWNING

## STACK-ON

**BONUS!**  
**FREE \$75 or \$100**  
**KTP Gift Card**  
with purchase\*  
*see inside for details*



**\$75**

**SPECIAL PRICING**  
on select  
**Stack-On Safes!**  
*see back page for details*



## WINCHESTER

**BONUS!**  
**FREE \$50**  
**KTP Gift Card**  
with purchase of select  
**WINCHESTER Safe Models**



**PLUS! American Furniture Classics!**



# KITTERY TRADING POST®

Mon-Sat 9-9, Sun 10-6 / Rte 1 Kittery, ME / 888-587-6246 / ktp.com / ktpguns.com

## SAFE FEATURES

### UNI-FORCE™ LOCKING SYSTEM

A vault-type cam system that engages the locking bolts to protect from external break-in.

### OMNIBARRIER™ SYSTEM

A system consisting of multiple layers of hardplate and other steel components to protect the lock from drill, punch or push attacks.

### DUO-FORMED® DOOR

A premier safe door of multiple layers of steel for superior strength and attack resistance.

### S&G GROUP II LOCK

Sargent and Greenleaf industry-standard mechanical lock. Provides excellent security for Browning safes.

### FIRE PROTECTION

Browning/Pro-Steel safes provide different levels of fire protection. Browning's Gold Series fire-resistant safes carry the Omega Point Laboratories 1200°F / 100 minutes fire rating. These safes have 150% more fire insulation than safes carrying the Omega Point Lab 1200°F / 30 minute fire rating. Note: Safes with fire protection are "fire resistant" not "fireproof".

### DPX (Duo-Plus Extra) STORAGE SYSTEM

Long gun storage on door back. System of pouches and pockets on door back. Convertible duo interior system inside with both shelves and long gun capacity.

**FREE \$75 KTP Gift Card**  
with purchase of ST24F Safe

**FREE \$100 KTP Gift Card**  
with purchase of  
ST34F, SR35F or  
SR26F Safe

## SELECT SERIES

- 12 gauge steel body
- 1200°F / 45 min. fire protection
- 1" chromed locking bolts on 3 sides
- Interior light and mirror package
- UL tool attack listed
- High gloss black finish, scroll scene

### ST34F

- 60" x 36" x 27", 775 lbs.
- 14 bolts (8 active)
- 20/30 + 10 gun DPX interior

**\$1,799.99**

(\$2,699.00 Value) #01181643

### ST24F

- 60" x 30" x 23", 590 lbs.
- 14 bolts (8 active)
- 9/18 + 7 gun DPX interior

**\$1,399.99**

(\$1,999.00 Value) #01181650

January 30 - April 1, 2012



# SPECIALS

# BROWNING



## BRONZE

- 12 gauge steel body
- 1200°F / 45 min. fire protection
- Force Deflector™ locking mechanism
- 1" formed door
- UL tool attack listed
- DPX storage system

### BR34F

- 60" x 36" x 27", 770 lbs.
- 14 (8 active) 1" steel locking bolts
- 20/30 + 10 gun DPX interior
- High gloss black finish, scroll scene

**\$1,799.99**

(\$2,399.00 Value) #16295016

### BR24F

- 60" x 30" x 23", 585 lbs.
- 14 (8 active) 1" steel locking bolts
- 9/18 + 7 gun DPX interior
- High gloss black finish, scroll scene

**\$1,299.99**

(\$1,799.00 Value) #14693212

- S&G electronic lock

**\$1,349.99**

(\$1,888.00 Value) #17998550

### BR16F

- 60" x 24" x 19", 460 lbs.
- 9 (5 active) 1" locking bolts
- 7/14 + 5 gun DPX interior
- High gloss black finish, scroll scene

**\$1,099.99**

(\$1,599.00 Value) #18895318

## SILVER

- Rugged 11 gauge steel body
- 1-5/16" Duo-Formed® door
- 1-1/4" chromed locking bolts on four sides
- 1200°F / 75 min. fire protection
- High gloss black cherry finish, mallard scene
- UL tool attack list

### SR35F

- 60" x 37" x 27", 835 lbs.
- 16 bolts (10 active)
- 20/30 + 10 gun DPX interior

**\$2,199.99**

(\$3,099.00 Value) #01181627

### SR26F (pictured)

- 60" x 30" x 25", 700 lbs.
- 16 bolts (10 active)
- 10/20 + 7 gun DPX interior

**\$1,799.99**

(\$2,499.00 Value) #01181635



Additional shipping/handling charges apply to safes not picked up at our store in Kittery, Maine. Ground delivery for safes is available to most addresses in the continental United States. Please call or see a shooting sports sales associate for a price quote & delivery details.



# WINCHESTER®

**BONUS!**  
**FREE \$50**  
**KTP Gift Card**  
with purchase of these select  
**WINCHESTER Safe Models**

## RANGER 19

- 12 gauge steel body
- 24 long gun capacity
- 1400°F / 60 min. fire protection
- 10 locking bolts
- Electronic Lock
- 59"H x 28"W x 21"D
- 520 lbs.
- Black Gloss

**\$799.<sup>99</sup>**



## SILVERADO 22

- 12 gauge steel body construction
- 24 long gun capacity
- 1400°F / 60 min. fire protection
- 12 locking bolts
- Electronic Lock
- 59"H x 30"W x 24"D
- 680 lbs.
- Black Gloss

**\$1099.<sup>99</sup>**

(Reg. KTP \$1299.99) #03080678



## WH-12

- 12 gauge steel body construction
- 1400°F / 75 min. fire protection
- 10 locking bolts
- 2 shelves + 2 storage drawers
- 42"H x 26"W x 22"D
- 420 lbs.
- Granite Gloss

**\$799.<sup>99</sup>**

(Reg. KTP \$999.99) #03080660

## WH-7

- 1400°F / 75 min. fire protection
- 6 locking bolts
- 30"H x 20"W x 22"D
- 240 lbs.
- Granite Gloss

**\$599.<sup>99</sup>**

(Reg. KTP \$699.99) #03080744

## American Furniture Classics

### 10 GUN CURIO/ SLIDER CABINET COMBINATION 887

- Sliding gun storage behind curio display area
- Lighted curio area
- Select wood & wood veneers
- Locking storage behind louvre door
- Tempered glass & adjustable shelves
- 70"H x 27"W x 21.5"D

**\$599.<sup>99</sup>**

(Reg. KTP \$799.99) #03487543

### THE GUNFATHER 100

- Concealment storage for 6 guns
- Brown Cherry finish, solid wood & wood veneers
- Locking storage behind louvre door • Westminster Chimes
- 76"H x 12"W x 12"D

**\$299.<sup>99</sup>**

(Reg. KTP \$399.99) #03487485

### REMINGTON MANTEL CLOCK 101

- (below) • Quartz movement
- Solid wood & wood veneers
- Lockable handgun & accessory storage
- Features Westminster Chimes
- 8"H x 15"W x 5"D

**\$49.<sup>99</sup>**

(Reg. KTP \$69.99)

#03487519



January 30 - April 1, 2012

# STACK-ON SPECIALS

Additional shipping/handling charges apply to safes not picked up at our store in Kittery, Maine. Ground delivery for safes is available to most addresses in the continental United States. Please call or see a shooting sports sales associate for a price quote & delivery details.



## SECURITY PLUS PISTOL/AMMO CABINET GCG-900

- 18" steel pistol/ammo cabinet
- Perfect for holding pistols, ammo, supplies & valuables
- Hunter green finish
- 21" x 10" x 18", 28.50 lbs.

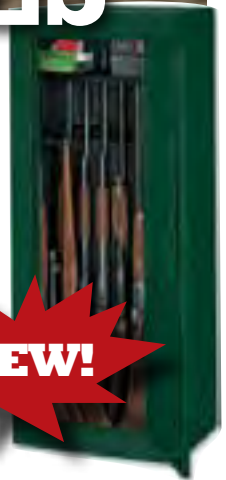
**\$69.<sup>99</sup>** (Reg KTP \$99.99) #12491460

## 14 GUN CABINET with BONUS Pistol Box GCG-14-PB

- Solid steel pry-resistant door
- 3 point locking system

**\$159.<sup>99</sup>** (Reg KTP \$299.99) #01780568

**NEW!**



## SECURITY PLUS 8 CABINET GCG-908

- 8-gun steel security cabinet
- Hunter Green finish
- Holds 8 Rifles or Shotguns up to 54" Tall
- 21" x 10" x 55", 64 lbs.

**\$119.<sup>99</sup>** (Reg KTP \$149.99) #12491445



## 18 GUN CONVERTIBLE SECURITY CABINET GCB-18C

- Steel cabinet holds 18 rifles or shotguns up to 54" tall
- Can be converted to hold 9 guns with adjustable shelving or all shelving
- Gloss black finish
- 21" x 18" x 55", 87 lbs.

**\$179.<sup>99</sup>** (Reg KTP \$299.99) #02189645

## 24 GUN SAFE E-29-MBE

- Electronic lock & flex interior
- Gloss black finish
- ETL fire rated for 30 minutes up to 1400° F
- 26-3/4" x 23" x 59", 430 lbs.

**\$699.<sup>99</sup>** (Reg KTP \$1199.99) #03489168

**Save \$500!**



## 16 GUN SAFE with Combination Lock GSG-716

- Combo lock & flex interior
- Hunter green finish
- Holds 16 rifles or shotguns
- 20-7/8" x 20-1/16" x 59", 198 lbs.

**\$499.<sup>99</sup>** (Reg KTP \$799.99) #02189611



## 24 GUN SAFE with Combination Lock GSX-524-55

- Dual lock 55 HT
- Hunter green matte finish
- Holds 24 rifles or shotguns or 16 guns plus storage
- ETL fire rated to manufacturer's specifications for 30 minutes up to 1400° F
- 26-3/4" x 23" x 55", 418 lbs.

**\$649.<sup>99</sup>** (Reg KTP \$1099.99) #02189637

